



# BUYERS' GUIDE

---

BESPOKE PRINTED TISSUE PAPER

# CONTENTS

**Contents** > Introduction > Build the Tissue Paper > Design & Print > Delivery & Aftercare

## INTRODUCTION

### 1. BUILD THE BAG

#### 1.1 OVERVIEW

#### 1.2 PRICING OVERVIEW

#### 1.3 STYLE

#### 1.4 MATERIAL WEIGHT

#### 1.5 SHEET SIZE

### 2. DESIGN & PRINT

#### 2.1 COLOUR OPTIONS

#### 2.2 ADDITIONAL FINISHES

### 3. DELIVERY & AFTERCARE

#### 3.1 LEAD TIME

# INTRODUCTION

[Contents](#) > **[Introduction](#)** > [Build the Tissue Paper](#) > [Design & Print](#) > [Delivery & Aftercare](#)

By giving you the information you need to make the best decision possible, we help you create a bag specific to your needs.

At Packaging Heaven we pride ourselves on offering unique, creative and quality-focused products

Our Buyers' Guide is designed to help you understand the wide variety of options available to you as a customer, a complete source of information, including all the features available as well as an overview of our most popular products



# 1. BUILD THE ISSUE PAPER

# 1.1 OVERVIEW

Contents > Introduction > **Build the Tissue Paper** > Design & Print > Delivery & Aftercare



## Approximate Cost

Approximate base cost of bags. Any additional finishes and dimensions will affect the final cost



## Lead Time

Approximate time it will take for bags to be delivered. Can be increased or decreased to suit your needs and budget.

MOQ

## Minimum Order Quantity

The minimum number of bags that can be ordered. Increasing your order volume will decrease your unit cost.

350 x 500mm



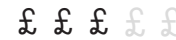
MOQ: 1000 units

500 x 700mm



MOQ: 1000 units

Full Colour



MOQ: 1000 units

Spot UV



MOQ: 1000 units

Full Coverage



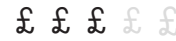
MOQ: 1000 units

Weight Increase



MOQ: 1000 units

Bespoke Size



MOQ: 1000 units

Varnished



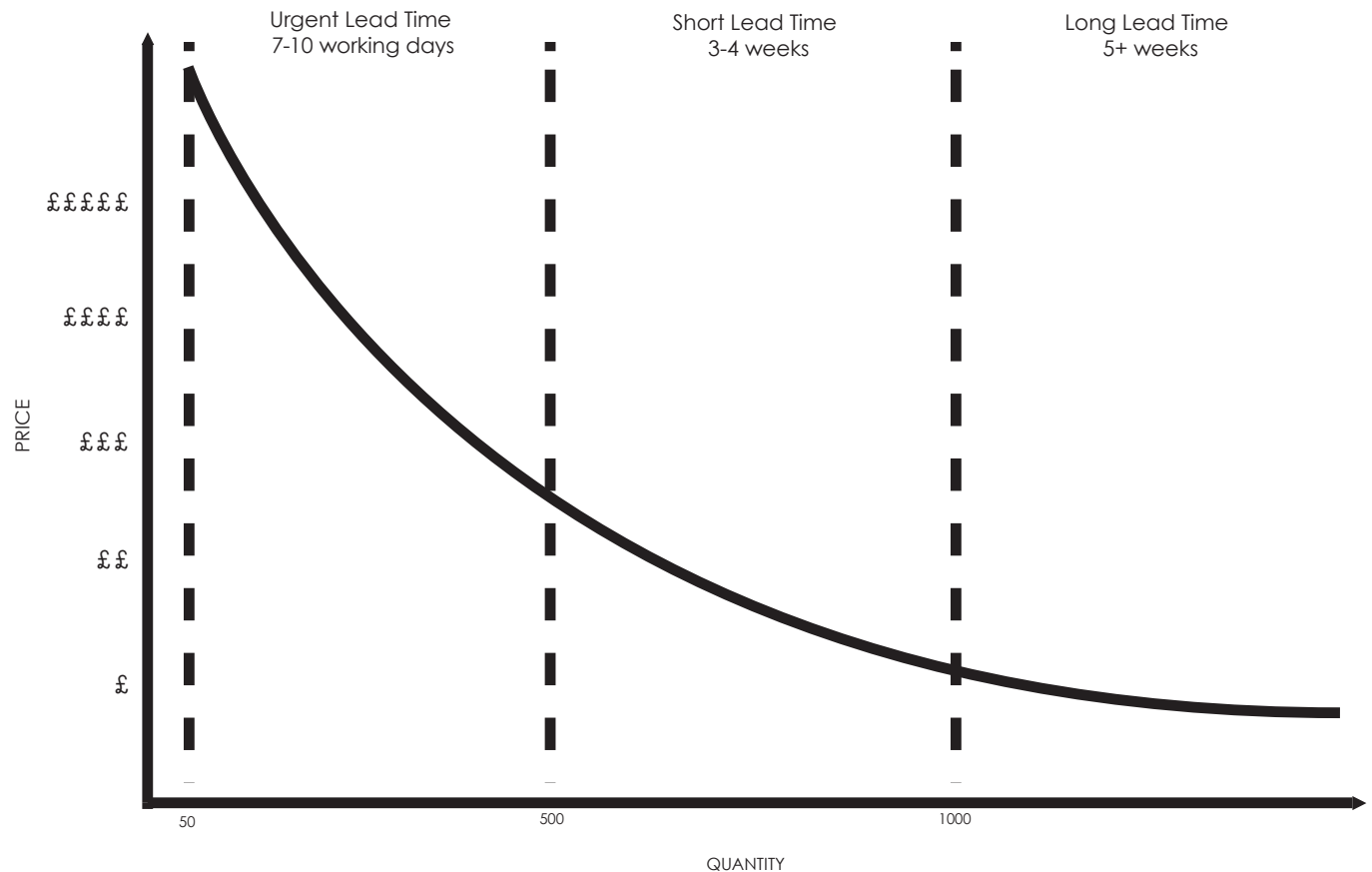
MOQ: 1000 units

# 1.2 PRICING OVERVIEW

Contents > Introduction > **Build the Tissue Paper** > Design & Print > Delivery & Aftercare

This graph gives an overview of the cost of an order depending on quantity ordered and the chosen lead time.

A larger order quantity and/or a longer leadtime will decrease the price per unit, therefore be much more cost effective



# 1.3 TISSUE STYLE

[Contents](#) > [Introduction](#) > **[Build the Tissue Paper](#)** > [Design & Print](#) > [Delivery & Aftercare](#)

## Step 1: Select your tissue style

### Tissue Paper

Standard tissue paper is produced at weights of 17 / 19 & 21gsm. This versatile material offers a cost effective packaging solution perfect for wrapping products, lining boxes & bags.

Tissue paper that is a little thicker than the standard weight. This material is available between 30 - 40gsm. It offers solid colour in comparison to the lighter weights, it comes as uncoated as standard. We advise that metallic prints are printed using this heavier weight to bring out their true vibrancy.

### Wrapping Paper

Usually between 80 - 90gsm in weight, produced with a varnished finish for added protection. Perfect for gift wrapping and has the ability to hold flood & full colour prints.

### Food Grade Paper

Usually between 80 - 90gsm in weight, commonly produced with a varnished finish for added protection. Perfect for wrapping food and has the ability to hold flood & full colour prints.

# 1.4 MATERIALWEIGHT

Contents > Introduction > **Build the Tissue Paper** > Design & Print > Delivery & Aftercare

## Step 2: Select your preferred paper weight

### 17 Microns

Standard weight for tissue paper.

### 19-21 Microns

Suited for 2+ printed colours. Varnished finish is available at these weight and above.

### 30-40 Microns

Suitable for full colour and flood print designs.

### 80-90 Microns

Used for wrapping paper



#### Industry standard weight.

Translucent in appearance.

*Not suitable for full colour, flood prints, metallic inks or varnish.*

#### Common weights of paper.

More opaque in appearance. Can hold more ink, brings out the true colour of a printed design.

Varnish can be added to the material. Food grade available.

*Available with all print options.*

#### More luxurious weight.

Excellent for full colour.

*Available with all print & finish options.*

#### Strong, sturdy and durable.

Perfect for gift wrapping and full colour designs.

Strong enough to carry heavy mail items.

*Available with all print & finish options.*



# 1.5 SHEETSIZE

[Contents](#) > [Introduction](#) > **[Build the Tissue Paper](#)** > [Design & Print](#) > [Delivery & Aftercare](#)

## Step 3: Choose the size in millimeters (WxLmm)

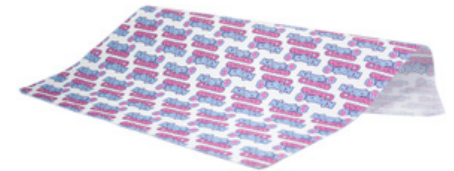
Small  
350x500mm



Standard  
500x700mm



Large  
700x1000mm



We have 3 standard size of tissue & wrapping paper. However should you require a bespoke size to suit your packaging needs, we can cater for tailored sheet sizes.

Fully Bespoke  
Custom Size



## 2. PRINT&DESIGN

# 2.1 COLOUR OPTIONS

Contents > Introduction > Build the Tissue Paper > **Design & Print** > Delivery & Aftercare

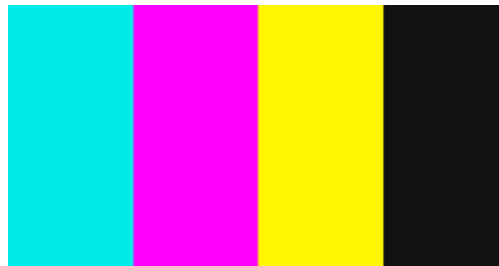
## Step 5: Select your print colours



### Pantone Specific

Used on designs with four or less colours.

*Available on all paper weights & finishes.*



### CMYK

Used on designs with five or more colours.

*Available on all paper weights & finishes.*



### Special Pantone

Includes metallic, pastel and neon.

*Available on all paper weights & finishes.*



### Full Colour

Used for photographic prints.

*Available on all paper weights & finishes.*

# 2.2 COLOUR OPTIONS

Contents > Introduction > Build the Tissue Paper > **Design & Print** > Delivery & Aftercare

**Step 6 (optional):** Choose any additional finishes to add to your design



## Metallic Pantone

Available on all styles of tissue paper.

Recommended on heavier weights to promote the inks metallic properties.



## Spot UV

Available on all styles of tissue paper.

This adds a premium feel and touch of luxury to an inexpensive plastic bag.



## Varnish

Available on weights of 20gsm and higher.

This finish adds luxury with a gloss varnish that comes with added protection and vibrant colours.



# 3. DELIVERY & AFTERCARE

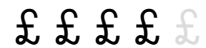
---

# 3.1 LEADTIMES

Contents > Introduction > Build the Tissue Paper > Design & Print > **Delivery & Aftercare**

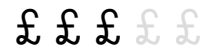
## Urgent Order

Delivered within 7 - 10 Days



## Short Lead Time

3 - 4 weeks



## Long Lead Time

12 - 16 weeks



### Need samples?

Sample packs are available and completely refundable when you purchase printed packaging.

### Need storage?

We also offer discounted warehouse facilities for all our customers. Talk to one of our Customer Account Managers for more information on 01772 331780