



BUYERS' GUIDE

BESPOKE PRINTED PLASTIC BAGS

CONTENTS

Contents > Introduction > Build the Bag > Design & Print > Delivery & Aftercare

INTRODUCTION

1. BUILD THE BAG

1.1 OVERVIEW

1.2 PRICING OVERVIEW

1.3 BAG SIZE AND SHAPE

1.4 MATERIAL TYPES

1.5 PLASTIC TYPE

1.6 HANDLE TYPES

2. DESIGN & PRINT

2.1 COLOUR OPTIONS

2.2 ADDITIONAL FINISHES

3. DELIVERY & AFTERCARE

3.1 LEAD TIME

INTRODUCTION

[Contents](#) > **[Introduction](#)** > [Build the Bag](#) > [Design & Print](#) > [Delivery & Aftercare](#)

By giving you the information you need to make the best decision possible, we help you create a bag specific to your needs.

At Packaging Heaven we pride ourselves on offering unique, creative and quality-focused products

Our Buyers' Guide is designed to help you understand the wide variety of options available to you as a customer, a complete source of information, including all the features available as well as an overview of our most popular products



1. BUILDTHEBAG

1.1 OVERVIEW

Contents > Introduction > **Build the Bag** > Design & Print > Delivery & Aftercare



Approximate Cost

Approximate base cost of bags. Any additional finishes and dimensions will affect the final cost



Lead Time

Approximate time it will take for bags to be delivered. Can be increased or decreased to suit your needs and budget.

MOQ

Minimum Order Quantity

The minimum number of bags that can be ordered. Increasing your order volume will decrease your unit cost.

Handleless



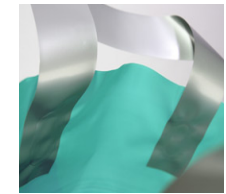
MOQ: 1000 units

Mail Carrier



MOQ: 1000 units

Flexi Loop



MOQ: 1000 units

T-shirt Vest Handle



MOQ: 10000 units

Die Cut



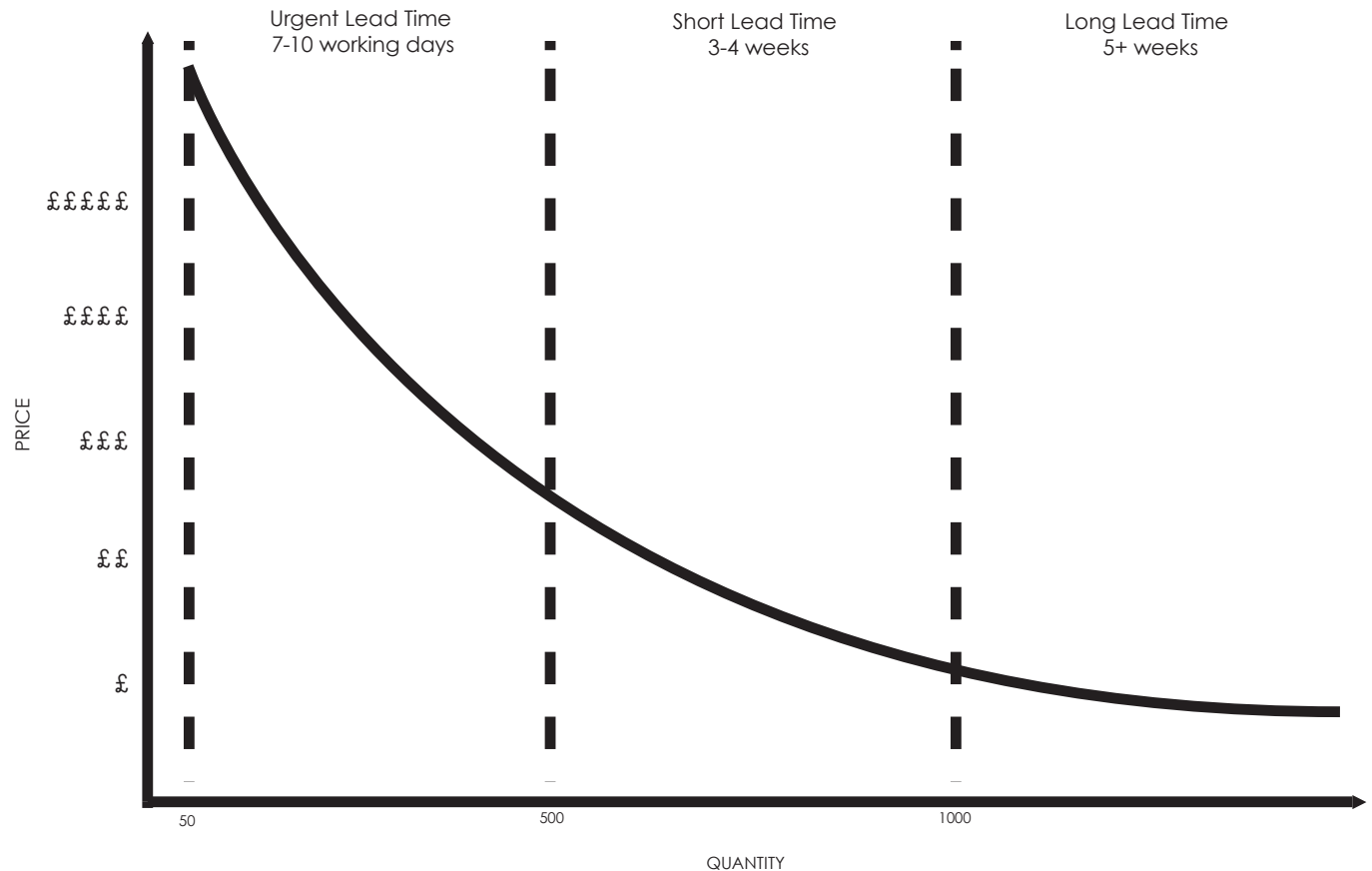
MOQ: 1000 units

1.2 PRICING OVERVIEW

Contents > Introduction > **Build the Bag** > Design & Print > Delivery & Aftercare

This graph gives an overview of the cost of an order depending on quantity ordered and the chosen lead time.

A larger order quantity and/or a longer leadtime will decrease the price per unit, therefore be much more cost effective



1.3 BAGSHAPE&SIZE

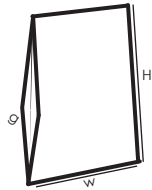
Contents > Introduction > **Build the Bag** > Design & Print > Delivery & Aftercare

Step 1: Choose the size in millimetres (WxHxGmm)

All bags are made bespoke to a size to fit your needs, here are some examples of common sizes and uses

H= Height
W= Width
G= Gusset

Option 1
Side Gusset
only.



Clothing & Retail

XX Large
(580x445x175mm)

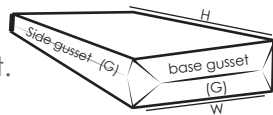
Clothing & Retail

Extra Large
(550x460x75mm)

Retail

Large
(400x480x90mm)

Option 2
Side and
Base Gusset.



High End Restaurant

Medium
(400x420x100mm)

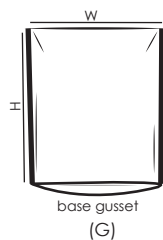
Takeaway Foods

Small
(410x340x160mm)

Promotional Items

Extra Small
(255x300x100mm)

Option 3
Base Gusset
Only.



1.4 MATERIAL TYPES

Contents > Introduction > **Build the Bag** > Design & Print > Delivery & Aftercare

Step 2: Select your preferred paper weight

17 Microns

This material is inexpensive and perfect for Fast Moving Consumer Goods such as groceries, this type of bag has a high load capacity.

30-50 Microns

This material is slightly thicker than the FMCG bags and is perfect for use in catering. Most commonly comes with a Die Cut handle.

60 Microns

This material is a thicker HDPE plastic that is suitable for retail purchases.

70 Microns

A thicker material that is strong and common material for E-Commerce and courier bags. Made from LDPE .

This weight is similar to grocery bags.

This is the standard micron weight for T-shirt vest handle bags. This is available in soft LDPE as well as recycled HDPE (hard).

Strong enough to carry groceries and other food items.

Available only with T-shirt Handle.

45 Microns is the industry standard.

This is the standard micron weight for consumer bags. this is available in soft LDPE as well as recycled HDPE (hard).

Can add a patch handle for a cost effective solution in durability.

Available with most handle choices

Thick, high end, luxury retail bags.

This is available in soft LDPE as well as recycled HDPE (hard). Commonly a die cut handle but flexi handle and clip close also.

Strong enough to hold shoes and other heavy retail items.

Available with most handle choices.

This weight is standard for Mail Carriers

This is the standard weight for Mailing Carriers. This is available in soft LDPE as well as recycled HDPE (Hard).

Strong enough to carry heavy mail items.

Available with most handle choices.

1.5 PLASTICTYPE

[Contents](#) > [Introduction](#) > **[Build the Bag](#)** > [Design & Print](#) > [Delivery & Aftercare](#)

Step 3: Select your preferred plastic type

LDPE

Low density polythylene is a soft plastic, can hold heavy objects with a small amount of stretch. Most commonly used for Fashion retail due to their soft plastic feel and flexibility.

Clear

A heavy weight and thick material, perfect to transfer heavy products such as ice, without compromising the purity while helping to prevent leaks.

HDPE

High-Density Polythylene is a widely recycled hard plastic, can withstand high amounts of stress with limited stretch. This plastic type can withstand higher temperatures continuously making them ideal for take away bags. This plastic is widely recycled.

Isothermal

A perfect solution for transit of heat sensitive or perishable items. This bag has a triple layer of high density insulation enabling them to maintain temperatures of 2° C and 8° C making them the ideal bag for cold food transit.

1.6 HANDLETYPES

Contents > Introduction > **Build the Bag** > Design & Print > Delivery & Aftercare

Step 4: Select your preferred handle



Adhesive Seal

Available on 30 - 70 microns weight plastic bags



Die Cut

Available on 45 - 70 microns weight plastic bags



Flexi Loop

Available on 45 - 70 microns weight plastic bags



T-Shirt Vest Handle

Available on 30-45 micron weight plastic bags



2. PRINT & DESIGN

2.1 COLOUR OPTIONS

Contents > Introduction > Build the Bag > **Design & Print** > Delivery & Aftercare

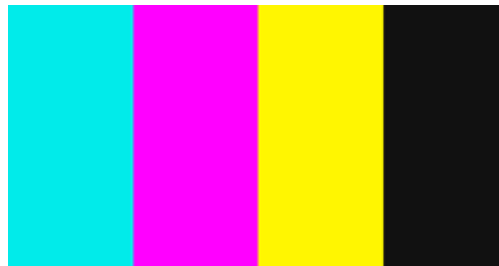
Step 5: Select your print colours



Pantone Specific

Used on designs with four or less colours.

Available on all plastic finishes.



CMYK

Used on designs with five or more colours.

Available on all plastic finishes.



Special Pantone

Includes metallic, pastel and neon.

Available on all plastic finishes.



Full Colour

Used for photographic prints.

2.2 COLOUR OPTIONS

Contents > Introduction > Build the Bag > **Design & Print** > Delivery & Aftercare

Step 6 (optional): Choose any additional finishes to add to your design



Metallic Foil

Available on all Paper Finishes in gold, silver, bronze, etc



Spot UV

Shiny varnish added to bag in any design.



Matte/Gloss Finish

Embossed metallic hot foil available on all paper finishes in gold, silver, bronze, etc.



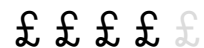
3. DELIVERY & AFTERCARE

3.1 LEADTIMES

Contents > Introduction > Build the Bag > Design & Print > **Delivery & Aftercare**

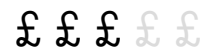
Urgent Order

Delivered within 2 - 3 weeks.



Short Lead Time

4 - 5 weeks



Long Lead Time

12 - 16 weeks



Need samples?

Sample packs are available and completely refundable when you purchase printed packaging.

Need storage?

We also offer discounted warehouse facilities for all our customers. Talk to one of our Customer Account Managers for more information on 01772 331780